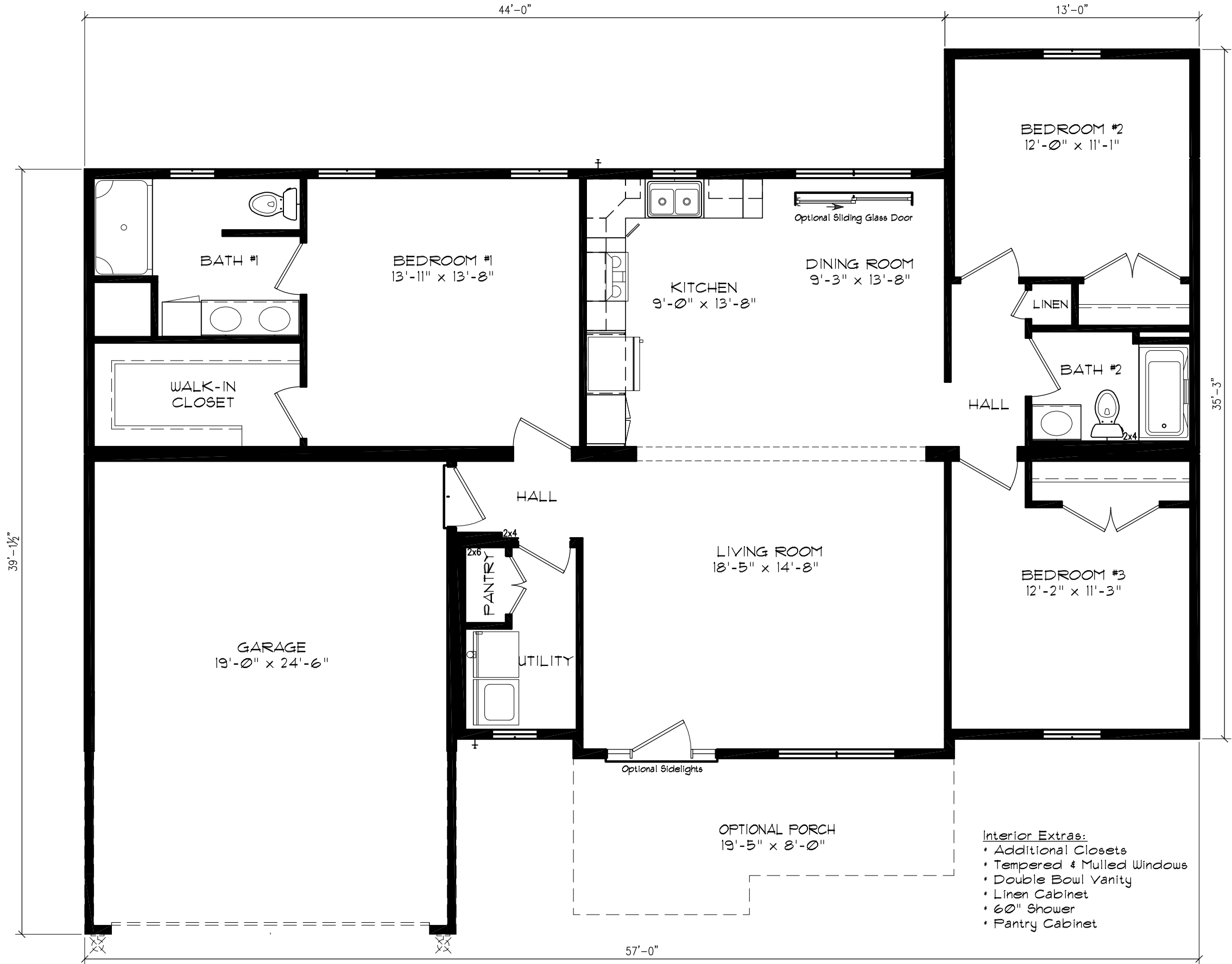




**BERACAH HOMES**

9590 Nanticoke Business Park Drive  
Greenwood, Delaware 19950  
www.beracahomes.com

State, County, City



**Bridgewater**  
35'9" x 57'  
1475 SQ. FT.

**CUSTOMER**

NAME: ??-??-????  
DATE: ??-??-????

SCALE: AS NOTED

**BUILDER**

NAME: DRAWN

REVISION: Juan Gonzalez  
Bridgewater\_V4

Ranch: 35'/29' x 57' (Bridgewater)

**SHEET:**

**L1**

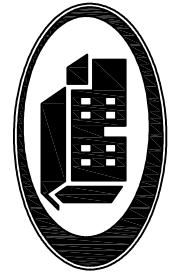
**PROJECT:**

**00-0000**



**FRONT ELEVATION**

- Shown w/ the following options not included in base price:
- \* 2 Sidelights at Front Door
  - \* Porch with Railing & Craftsman Columns with Stone
  - \* Window Cross Heads w/ Keystone on Windows
  - \* Window Lineals
  - \* Carraige Style Garage Doors with Carraige Lights
  - \* Board & Batten Siding with Decorative Corbels & Band Board
  - \* Stone on Foundation
  - \* Super Corners



**BERACAH HOMES**

9590 Nanticoke Business Park Drive  
Greenwood, Delaware 19950  
www.beracahhomes.com

State, County, City

**CUSTOMER**

DATE: ??-??-????

SCALE: AS NOTED

NAME: **BUILDER**

DRAWN: **DRAWN**

REVISION: Juan Gonzalez  
Bridgewater\_V4

HOUSE STYLE: **Ranch: 35'/29' x 57' (Bridgewater)**

SHEET:

**LIT-ELEV**

PROJECT:

**00-0000**